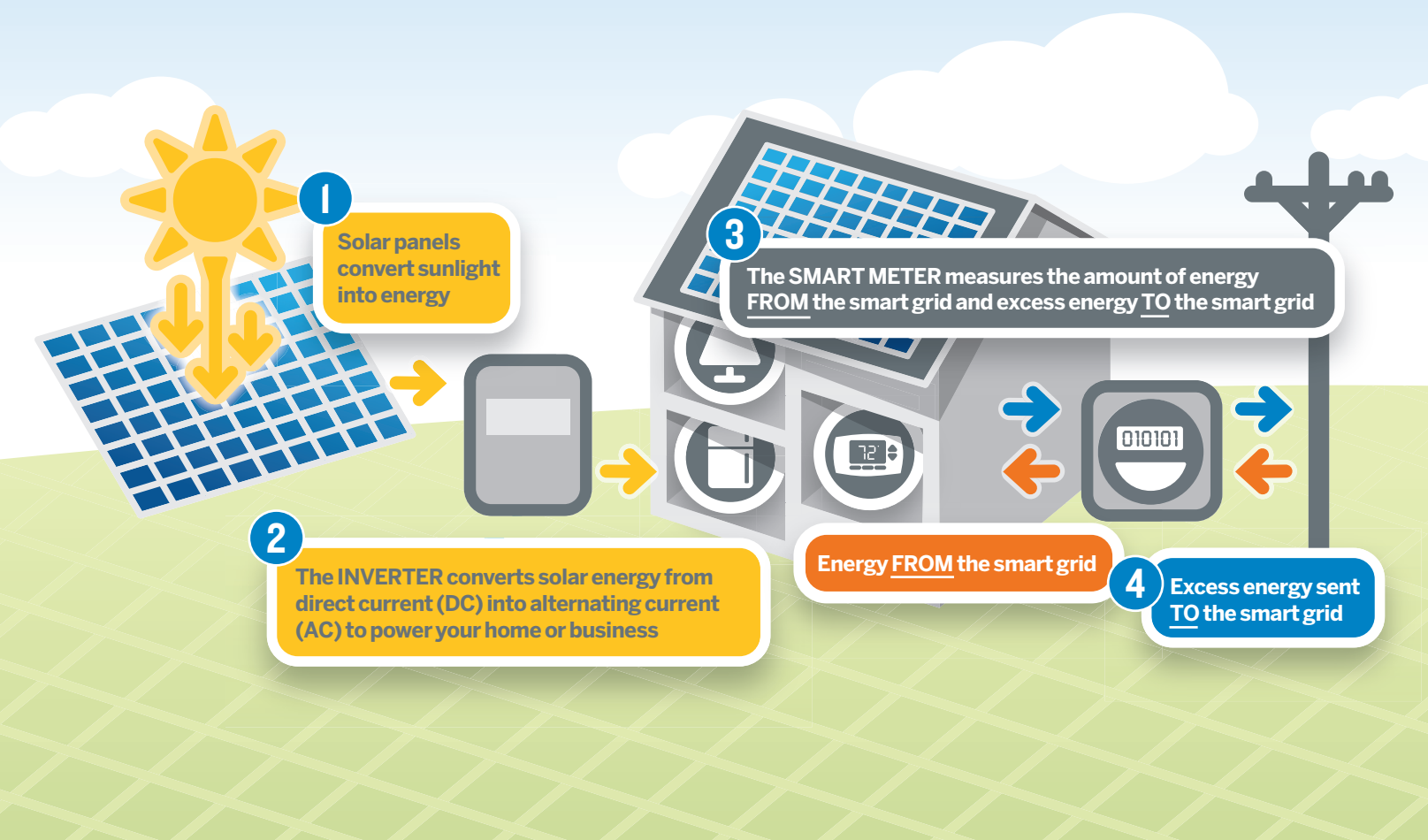


HOW NET METERING WORKS



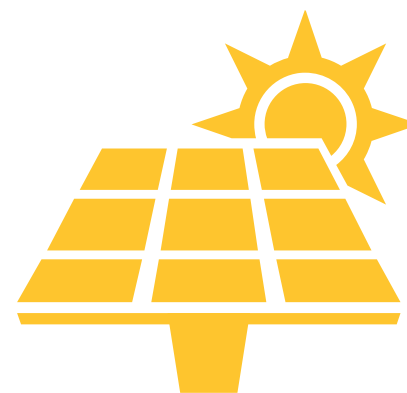
NET METERING CREDIT EXAMPLES

	Energy Produced by Solar Panels	Total Energy Used by Customer	kWh FROM the Smart Grid	Excess kWh TO the Smart Grid
Energy Produced is <u>LESS THAN</u> Energy Used	5 kWh	7 kWh	2 kWh	0 kWh
Energy Produced <u>EQUALS</u> Energy Used	5 kWh	5 kWh	0 kWh	0 kWh
Energy Produced is <u>GREATER THAN</u> Energy Used	5 kWh	3 kWh	0 kWh	2 kWh



We're here to help you throughout the journey.
Visit PECO.com/MyGPC

CONNECTING PRIVATE SOLAR ENERGY SYSTEMS AND NET METERING



Our clean energy future.

We have a variety of resources that can help you get your private solar energy system up and running. And we're here to help you through the journey!

For Answers to Frequently Asked Questions

PECO.com/MyGPC

For Questions about Connection to our Smart Grid

Email: pecodistributedenergy@exeloncorp.com
Phone: 833-732-6334



Producing your own energy?

Let PECO help you connect to the grid.



PECO.com/MyGPC

Our Clean Energy Future

Now that you've decided to generate your own energy, PECO is here to help you safely connect to the electric system.

You'll find some important information on the following pages to help you get your private solar energy system up and running so that you can enjoy the many benefits of generating your own power.

Before submitting your application, please take a moment to read up on the following:

- How Net Metering Works
- The Step-by-Step Interconnection Process
- Helpful tips to consider before getting started



For answers to additional questions you might have about interconnecting to the grid, contact **PECO Distributed Energy Group** at **833-732-6334** or email pecodistributedenergy@exeloncorp.com

Step-by-Step Connecting to PECO's Electric System

Connecting your private solar energy system to the grid requires following a few important steps. These are summarized below.



1 Apply
Be sure to contact your municipality regarding permit requirements or ordinances covering the operation of a private solar energy system. Then, with the assistance of your solar contractor, complete and submit the interconnection application and other required documentation appropriate for your project to PECO. You can submit your project information electronically or download the application at PECO.com/MyGPC. Be sure to include the application fee. Mail to:
PECO, 1050 W. Swedesford Rd., Berwyn, PA 19312

2 Application Review
PECO will review your interconnection application to ensure your private solar energy system can be safely and reliably connected to PECO's electric system. Depending on the complexity of your project, this may take 10-20 days. During this time, you may receive requests to provide additional information.



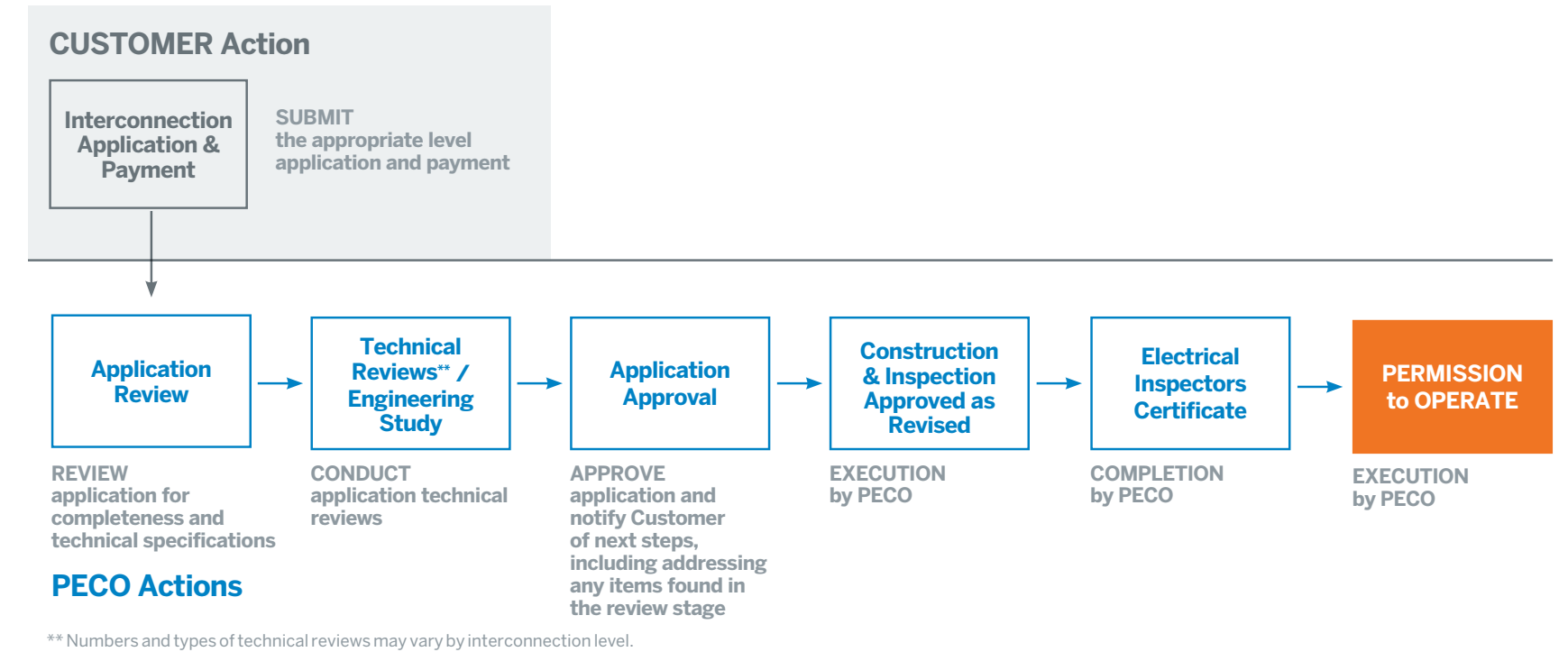
3 Install Your System
Install your private solar energy system after you have received written approval of your interconnection application from PECO.

4 PECO Inspects Your System
PECO may conduct an electrical inspection at your location to ensure the integrity of the interconnection. Allow ten days for this step.

5 Operate Your System
You may begin operating your private solar energy system once you receive a signed Permission to Operate letter from PECO and new meter(s) have been installed. Allow ten days for this step.

For a closer look into the process PECO follows in its review and approval of any application, along with the amount of time needed to review, see the diagrams to the right.

The Interconnection Process



The Interconnection Process – DURATION & FEES

Amounts listed are base fees, additional fees may apply.

LEVEL	Duration	Fee
LEVEL 1 (≤10kW)	25 DAYS	FEE: \$100
LEVEL 2 (10kW–50kW)	30 DAYS	FEE: \$250 +\$1/kW
LEVEL 3 (≥10kW–50kW NON-INVERTER)	VARIABLES WITH COMPLEXITY	FEE: \$350 +\$2/kW
LEVEL 4 (≤50kW NON-EXPORT)	< 10KW= 30 DAYS < 50KW= 35 DAYS	FEE: \$350 +\$2/kW

BUSINESS DAYS

How long is the Interconnection Process?

Interconnection applications and processing times are classified by the size and type of renewable energy system being installed. The time to review and approve applications varies by level of interconnection as seen in the chart above. In some cases, engineering studies may be needed to analyze the entire circuit to find a solution. This may add more time and costs to your project. Duration and fees apply to typical residential installations.

Helpful Tips

- **Understand your energy use.** Work with your solar installer to appropriately size your solar energy system.
- **The production of your private solar energy system can vary** – weather, tree cover and required maintenance can all affect how much energy you produce.
- To ensure your private solar energy system is safely and reliably connected to the smart grid **do not operate your system without approval from PECO and your municipality.**
- **Participate in net metering and receive credits on your energy bill** when you produce more energy than you need.

Visit PECO.com/MyGPC for additional information.



An Exelon Company