



SALFORD QUARRY SUPERFUND COMMUNITY UPDATE

LOWER SALFORD TOWNSHIP, MONTGOMERY COUNTY, PA

AUGUST 2012

EPA SEEKS PUBLIC COMMENT ON PROPOSED CLEANUP PLAN

The United States Environmental Protection Agency Region 3 (EPA) has developed a **Proposed Remedial Action Plan (PRAP)** for cleaning up waste, soil and sediment for Operable Unit 1 (OU1) at the Salford Quarry Superfund Site in Lower Salford Township.

We Want Your Opinion!

The public has a voice in EPA's decision-making process. Let us know what you think about our preferred cleanup option during the 30-day public comment period from:

August 2, 2012 to August 31, 2012

Please mail comments to:

**U.S. EPA (3HS21)
ATTN: Sharon Fang
1650 Arch Street
Philadelphia, PA 19103**

**You may also send them via email to:
fang.sharon@epa.gov**

This fact sheet summarizes the plan. A full copy of the plan, along with other documents, may be viewed at:

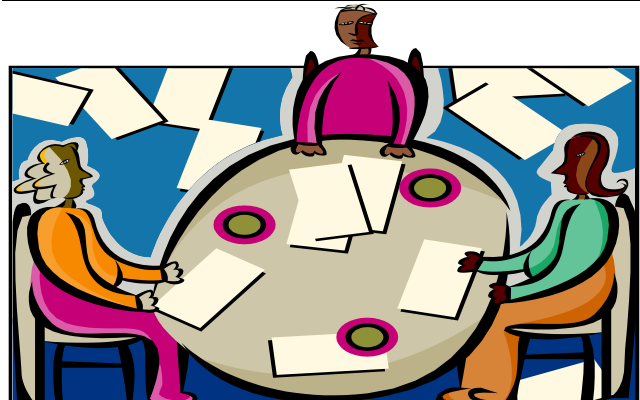
<http://www.epa.gov/arweb>

Public Meeting

**AUGUST 13, 2012
6:30 to 8:30 PM**

LOWER SALFORD TOWNSHIP BUILDING

**379 Main Street
Harleysville, PA 19438**



EPA'S PREFERRED CLEANUP OPTION

EPA's preferred cleanup option uses a combined approach to address waste, soil and sediment including:

WS4: Constructing an engineered cell on site to contain contaminated material. An engineered cell is a containment structure that is designed to prevent direct contact with the contaminated waste, soil and sediment and to prevent rainwater, run-off water and groundwater from carrying contamination into the environment.

SD3: Removing contaminated sediments and consolidating them in the on-site engineered cell.

EPA'S PREFERRED OPTION THE BENEFITS

The goal for EPA's preferred option is to prevent exposure to site related contamination and reduce the migration of contamination to the groundwater.

EPA's preferred option also includes provisions to monitor the surface water and groundwater to ensure the remedy is effective. It also calls for institutional controls to restrict future land use and ensure the integrity of the remedy.

WS4 (Engineered Cell) will be designed to:

- ✓ Prevent human and ecological exposure to site contaminants.
- ✓ Minimize the migration of contaminants to groundwater.
- ✓ Provide long-term effectiveness.

SD3 (Removal and Onsite Disposal) will be designed to:

- ✓ Remove contaminated sediment to prevent further contamination of the surface and groundwater.
- ✓ Move contaminated sediment into the engineered cell.

OTHER OPTIONS EVALUATED BY EPA

Waste and Soil Alternatives (WS)

- WS1 No Action
- WS2 Limited Action
- WS3 Capping
- WS5 Solidification/Stabilization
- WS6 Excavation and Offsite Treatment/Disposal

Sediment Alternatives (SD)

- SD1 No Action
- SD2 Limited Action
- SD4 Removal and Offsite Treatment/Disposal

EPA'S NINE CRITERIA

Before a final cleanup option is chosen, all of the options must be judged against nine criteria to make sure that EPA is selecting the best cleanup plan. The nine criteria are:

- 1. Overall Protection of Human Health and the Environment*
- 2. Compliance with Applicable or Relevant and Appropriate Requirements*
- 3. Long-term Effectiveness and Permanence*
- 4. Reduction of Toxicity, Mobility, or Volume Through Treatment*
- 5. Short-term Effectiveness*
- 6. Implementability*
- 7. Cost*
- 8. State Acceptance*
- 9. Community Acceptance*

RECORD OF DECISION

After the public comment period has ended and all comments have been reviewed and carefully considered, EPA will select the final cleanup plan for the Site. The final cleanup will be described in a Record of Decision (ROD).

The answers to the public comments will be recorded in a document called the Responsiveness Summary, which is part of the ROD. If EPA receives any comments or information that changes the preferred cleanup option, that will also be recorded in the ROD.

BRIEF SITE HISTORY

- ◆ Salford Quarry, a three-acre abandoned stone quarry, was used for waste disposal. In 1963, American Olean Tile Company (AOT), a subsidiary of the National Gypsum Company, purchased the site for waste disposal.
- ◆ AOT used the quarry to dispose of tile waste, sludge and sediment from their operations, and two 10,000-gallon tanks containing tile slurry (boron) and waste oil. In 1982, the site stopped receiving waste and the landfill was closed.
- ◆ National Gypsum subsequently sold AOT, but retained all environmental liabilities concerning the Salford Quarry Site. National Gypsum filed for bankruptcy in 1990.
- ◆ The site was listed on EPA's National Priorities List (NPL) in 1990, however a 1992 decision by the United States Court of Appeals removed the Salford Quarry site from the NPL.
- ◆ In 1995, EPA completed a public water line for 113 residences near the site.
- ◆ In 2009, EPA finalized the site on the NPL, making the site eligible for federal cleanup.
- ◆ The primary health risks at the site are potential exposure to boron, other inorganic compounds and trichloroethylene (TCE) migrating from the quarry waste and soil into groundwater. Ecological risk was also identified for boron and other inorganic compounds in sediment.

FOR MORE INFORMATION

There are several ways to review site files:

- ✓ Review the Administrative Record, which includes EPA's decision documents and other supporting materials used for selecting the cleanup remedy at: <http://www.epa.gov/arweb>
- ✓ Visit the site's website at:
<http://epa.gov/reg3hwmd/super/sites/PAD980693204index.htm>
- ✓ Indian Valley Public Library
100 East Church Ave. Telford, PA 18969
215-723-9109
<http://www.ivpl.org>
- ✓ Visit EPA's Public Reading Room at:
1650 Arch Street, Philadelphia, PA.
Please call the Administrative Record Coordinator at 215-814-3157 for an appointment.

SITE CONTACTS

Vance Evans

Community Involvement Coordinator
U. S. EPA Region 3
1650 Arch Street (3HS52)
Philadelphia, PA 19103-2029
215-814-5526 or 800-553-2509
evans.vance@epa.gov

Sharon Fang

Remedial Project Manager
U. S. EPA Region 3
1650 Arch Street
Philadelphia, PA 19103-2029
215-814-3018
fang.sharon@epa.gov

**The U.S. Environmental Protection Agency
Announces the Cleanup Plan for the Salford Quarry Superfund Site**



U.S. Environmental Protection Agency Region 3
Attn: Vance Evans (3HS52)
1650 Arch Street
Philadelphia, PA 19103