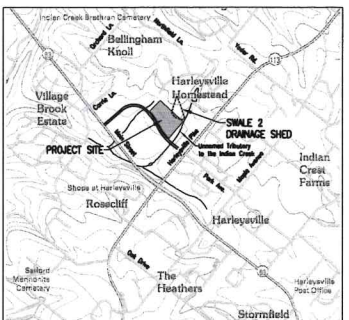


LEGEND - EXISTING

- EXISTING CONTOUR
- STORM SEWER AND ALLET
- RIGHT-OF-WAY LINE
- PROPERTY LINE
- EXISTING TREES
- TREES/WOODS AREAS
- SOILS DESIGNATION
- EXISTING CURB
- EXISTING EDGE OF PAVEMENT
- EXISTING GRAVEL AREA TO BE REMOVED

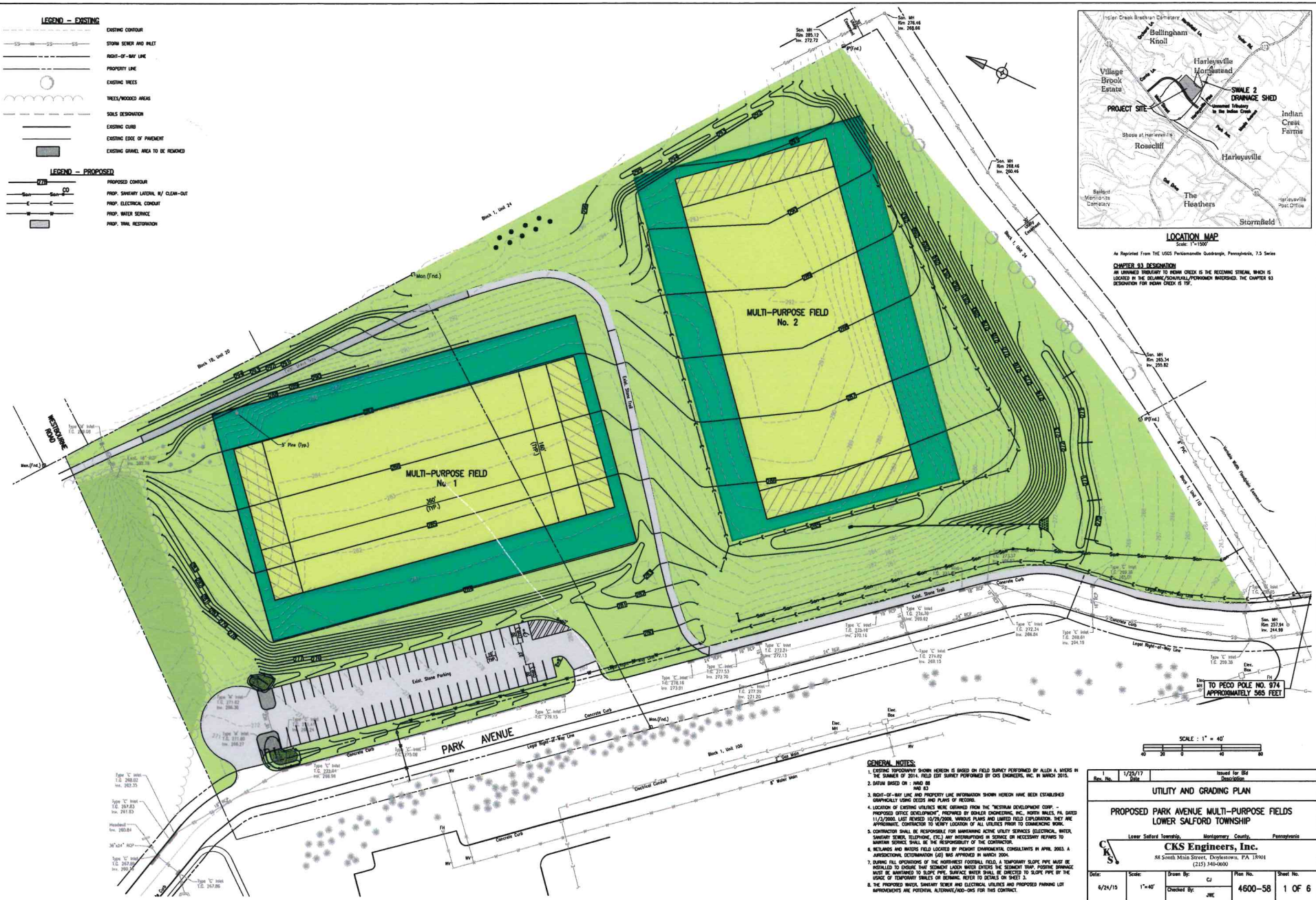
LEGEND - PROPOSED

- PROPOSED CONTOUR
- PROP. SANITARY LATERAL W/ CLEAN-OUT
- PROP. ELECTRICAL CONDUIT
- PROP. WATER SERVICE
- PROP. TRAIL RESTORATION



LOCATION MAP
Scale: 1" = 100'

As Reported From THE USGS Potomac-Rappahannock Quadrangle, Pennsylvania, 7.5 Series
CHAPTER 93 DESIGNATION
 AN UNPAVED TRAILWAY TO BE OPEN CHECK IS THE RECEIVING STRIAL, WHICH IS LOCATED IN THE OLYMPIA/POCONO/PORCOWICH INTERSECT, THE CHAPTER 93 DESIGNATION FOR BEAN CHECK IS 75'



GENERAL NOTES:

1. EXISTING TOPOGRAPHY SHOWN HEREIN IS BASED ON FIELD SURVEY PERFORMED BY ALLEN A. WISER IN THE SUMMER OF 2014. FIELD SURVEY PERFORMED BY CDS ENGINEERS, INC. IN WINTER 2015.
2. DATUM BASED ON: NAD 83
3. RIGHT-OF-WAY LINE AND PROPERTY LINE INFORMATION SHOWN HEREIN HAVE BEEN ESTABLISHED GRAPHICALLY USING DEEDS AND PLATS OF RECORD.
4. LOCATION OF EXISTING UTILITIES WERE OBTAINED FROM THE "METRIUM DEVELOPMENT CORP. - PROPOSED OFFICE DEVELOPMENT" PREPARED BY HANLEY ENGINEERING, INC., NORTH WALLEY, PA, SITES 11/2/2008. LAST REVISED 10/2/2009. VARIOUS PLANS AND LIMITED FIELD EXPLORATION THAT ARE APPROXIMATE. CONTRACTOR TO VERIFY LOCATION OF ALL UTILITIES PRIOR TO COMMENCING WORK.
5. CONTRACTOR SHALL BE RESPONSIBLE FOR OBTAINING NECESSARY UTILITY SERVICES (ELECTRICAL, WATER, SANITARY SEWER, TELEPHONE, ETC.) ANY DISCREPANCIES IN SERVICE OR NECESSARY REPAIRS TO EXISTING SERVICES SHALL BE THE RESPONSIBILITY OF THE CONTRACTOR.
6. RETAINS AND MISERS FIELD LOCATED BY PRESENT DRAINAGE/CONCRETE CONSULTANTS IN APRIL 2003. A JURISDICTIONAL DETERMINATION (JD) WAS APPROVED IN MARCH 2004.
7. DURING FULL OPERATION OF THE RESIDENTIAL FORTAL FIELDS, A TEMPORARY SLOPE PIPE MUST BE INSTALLED TO ENSURE THAT SEGMENT LATER WATER ENTERS THE SEGMENT TOW. POSITIVE DRAINAGE MUST BE MAINTAINED TO SLOPE PIPE. SURFACE WATER SHALL BE DIRECTED TO SLOPE PIPE BY THE USE OF TEMPORARY STAKES OR BARRIERS. REFER TO DETAILS ON SHEET 3.
8. THE PROPOSED WALKWAY, SANITARY SEWER AND ELECTRICAL UTILITIES AND PROPOSED PARKING LOT IMPROVEMENTS ARE PRELIMINARY ALTERNATE/ADD-ONS FOR THIS CONTRACT.

SCALE: 1" = 40'

Rev. No.	1/25/17	Issued for 64
Date		Description
UTILITY AND GRADING PLAN		
PROPOSED PARK AVENUE MULTI-PURPOSE FIELDS LOWER SALFORD TOWNSHIP		
Lower Salford Township, Montgomery County, Pennsylvania		
CKS Engineers, Inc. 84 South Main Street, Doylestown, PA 19401 (215) 346-6900		
Date:	Scale:	Drawn By:
6/24/15	1"=40'	CJ
Checked By:	Plan No.	Sheet No.
JNE	4600-58	1 OF 6